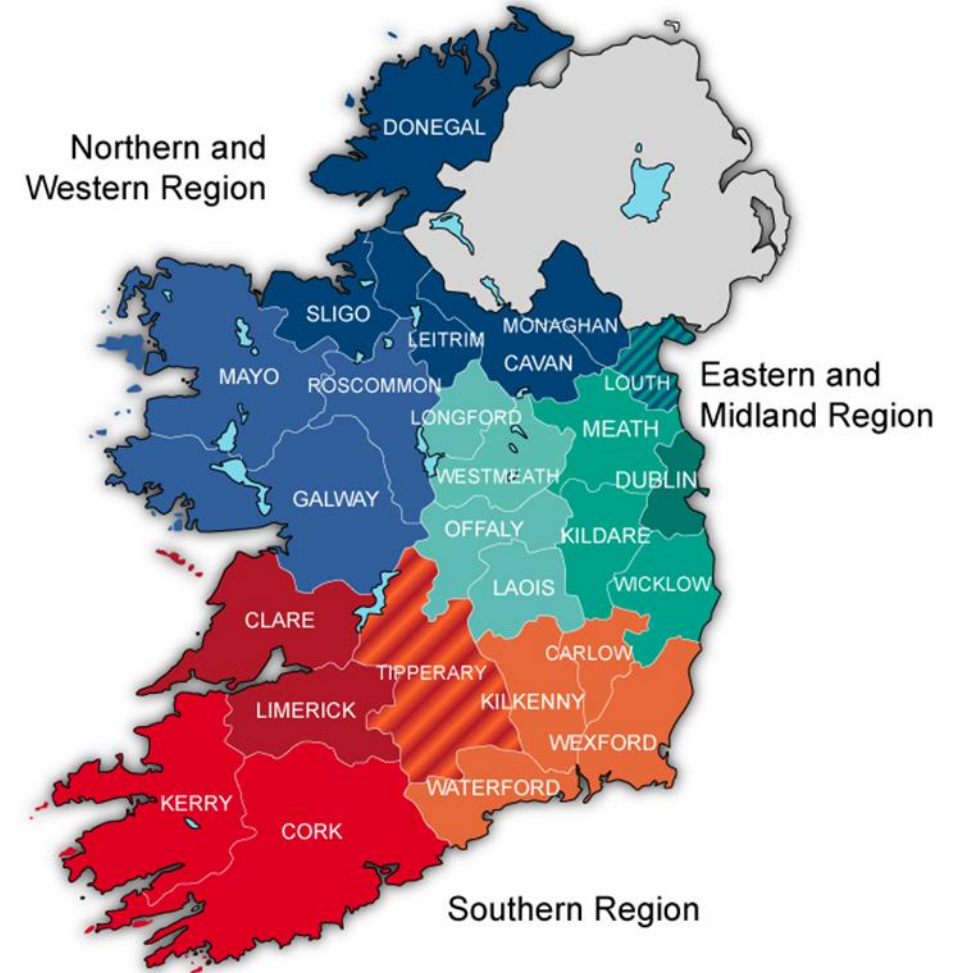


What is ERDF Funding?



Co-funded by
the European Union

*“The European Regional Development Fund (ERDF) aims to strengthen economic, social and territorial cohesion in the European Union by correcting imbalances between its regions. In 2021-2027 it will enable investments in a **smarter, greener, more connected and more social Europe that is closer to its citizens**” – European Commission*



Assemblies Role in European Funding

- **European Territorial Cooperation / Interreg**
 - National Contact Point
 - Promote Programme
 - Support Irish Applicants
 - Represent Regions at Programme Level
 - First Level Control
 - Audit Function for Irish Project Partners
- **Regional Programmes and Just Transition Fund**
 - Managing Authority
 - The effective implementation, management, and monitoring of the ERDF Programmes
 - Designing and developing the new 2021 2027 Programme in accordance with the European Union (EU) regulations and guidelines.
 - Oversees the entire project lifecycle, including project selection, contracting, and implementation.
 - The Managing Authority team ensures that ERDF-funded projects comply with the applicable EU regulations, national legislation, and programme guidelines.

Interreg Atlantic Area – Programme Area

Programme in numbers



151
million euros total budget available



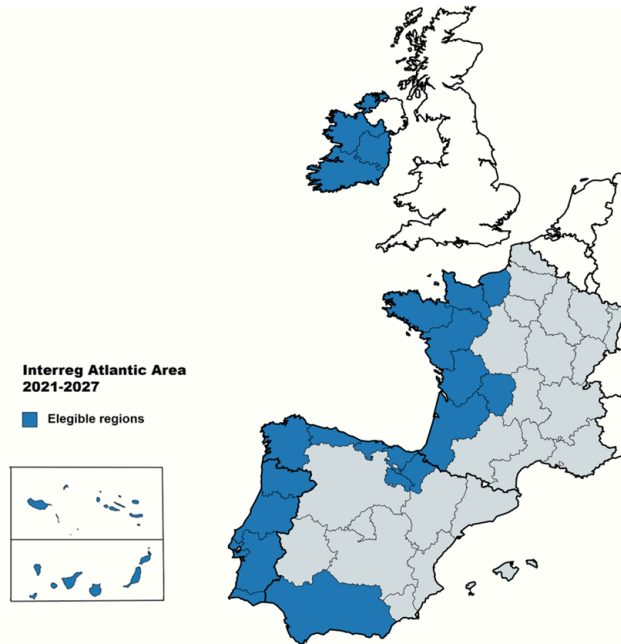
04
countries



26
regions



04
investment priorities



Interreg Atlantic Area
2021-2027

■ Eligible regions

Programme Size €151M (€113M ERDF)
Programme offers a maximum co-financing rate of 75%
Use of Simplified Cost Options
Project budget in the range EUR €1 - € 3.5 million;
Typical duration is up to 36 months;



BLUE INNOVATION AND
COMPETITIVENESS

[More Info](#)



BLUE AND GREEN
ENVIRONMENT

[More Info](#)



SUSTAINABLE TOURISM AND
CULTURE

[More Info](#)

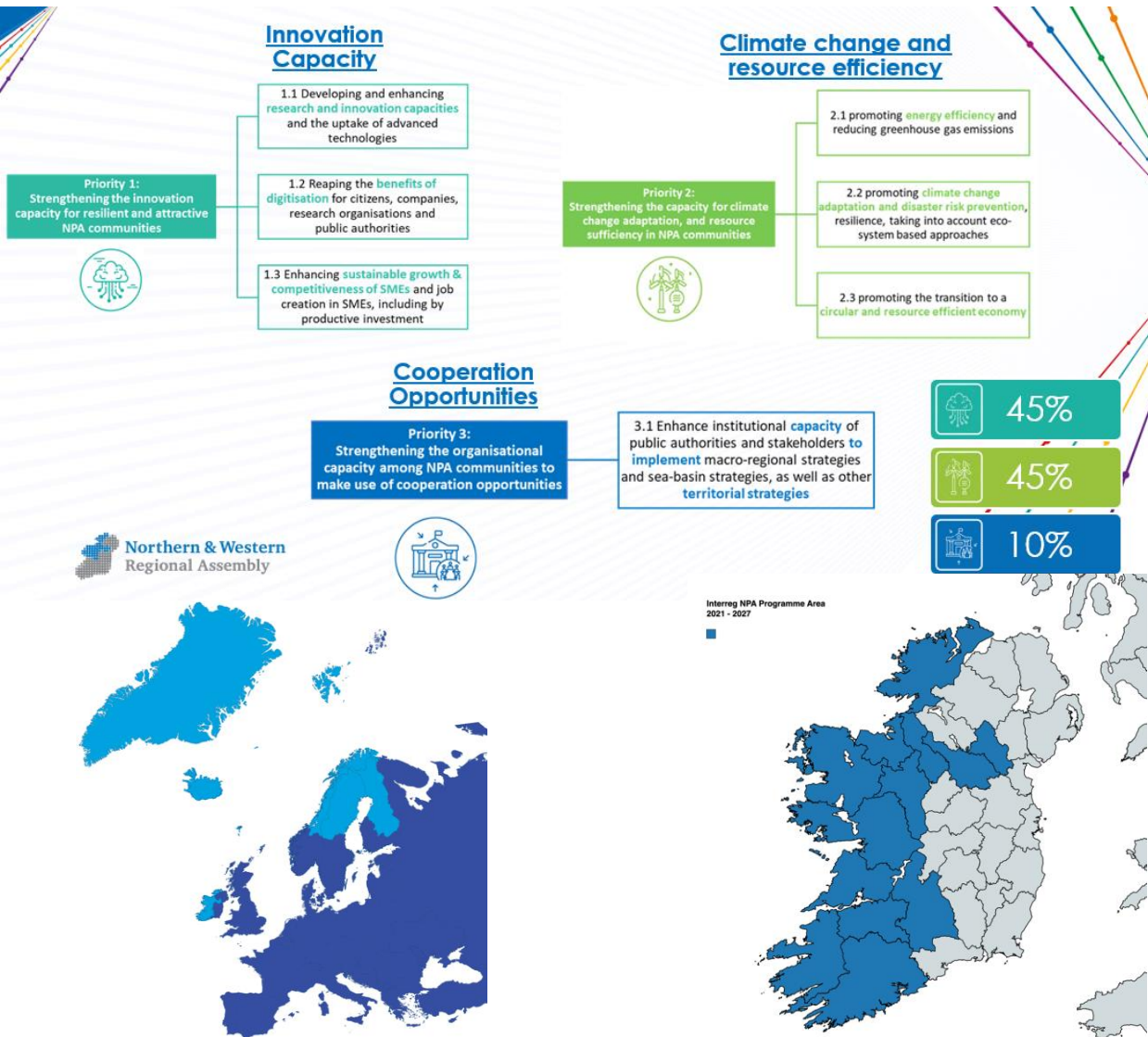


A BETTER GOVERNANCE FOR
COOPERATION

[More Info](#)

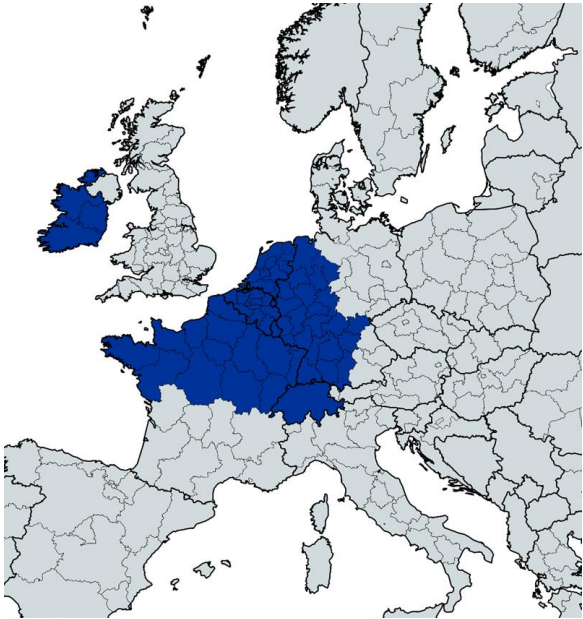


Interreg Northern Periphery and Arctic



- The Interreg Northern Periphery and Arctic (NPA) Programme provides a framework for regions to work together with a focus on promoting sustainable development in remote and sparsely populated communities.
- Ireland, Sweden, Finland, Norway, Iceland, Faroe Islands, Greenland
- Programme Size €47M (€40M ERDF)
- Main projects have a budget of up to €1.5 million
- 65% Grant funding rate

Interreg North West Europe



Priority areas

1. Climate and environment
2. Energy transition
3. Circular Economy
4. Innovation and resilience
5. Inclusive society

7 countries

Belgium, France, Germany, Ireland, Luxembourg, the Netherlands and Switzerland

Partnerships

3 partners from 3 different countries

Overall budget:

> €310 million ERDF

Co-financing : 60%

 **FOURTH CALL FOR PROPOSALS**
opens 15 November 2023

 **APPLICATION STEP 1**
closes 21 March 2024

 **APPLICATION STEP 2**
closes 26 September 2024

 **NOTIFICATION & PROJECT START**
December 2024



URBACT

URBACT is an ETC programme co-funded by ERDF-promoting sustainable urban development in cities

Since 2002



Over 1000 cities involved



more than 150 networks

Promoting sustainable urban development in towns and cities -all 31 Irish local authorities are eligible

€79.7M 2023-2029

- Integrated approach > tackling different policy areas and governance levels at the same time
- Participative approach > involving all local stakeholders (URBACT Local Group- ULG)
- Transnational exchange > learning from peers
- Expertise > customised support provided to all networks

How does it work?-the network types!



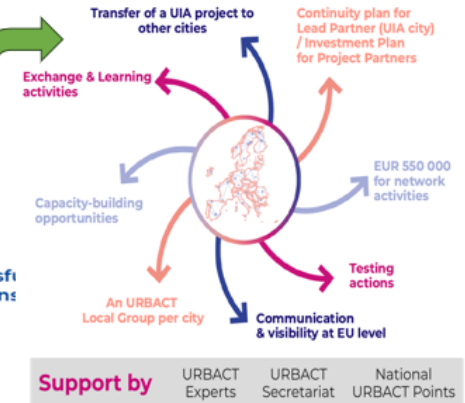
Cities and local stakeholders co-produce an Integrated Action Plan to tackle their common policy challenges.



Cities share and adapt a successful Good Practice that has already been implemented in their Network's lead city.



Cities adapt the experience of a successful Urban Innovative Actions project and develop an investment plan to implement it.



Support by URBACT Experts, URBACT Secretariat, National URBACT Points

2023

January- March
Call for Action
Planning
Networks

2024

10 January- 20
March
Call for
Innovation
Transfer
Mechanism

15 April-
June
Call for
Good
Practices

2025

April - June
Call for Transfer
Networks

2026

Call for Action
Planning
Networks



European Urban Initiative - EUI

EUI Innovative Actions & Capacity-building menu

EUROPEAN U R B A N I N I T I A T I V E

**Our final goal :
sustainable urban
development in
Europe !**



Innovative Actions

Innovative, participatory, measurable, sustainable, transferable and scalable!

€315m available with up to €5m ERDF w/max co financing rate of 80%.

Implementation period is 3.5 years.

Target audience: urban localities w/population of 50k+

New call launched in May 2024 with themes available for this call in March.

City-to-city exchanges

Brings together an urban authority facing an implementation challenge, and another one or two, who can help tackling this challenge with their expertise and experience.

Target audience: urban and sub-urban localities of all sizes.

Call now open on a continuous basis

Peer reviews

Art. 11 and Art. 7 Cities review their SUD strategies and get recommendations from peers during a 2-day event. Experts guide cities during the whole process.

Target audience: urban and sub-urban localities of all sizes.

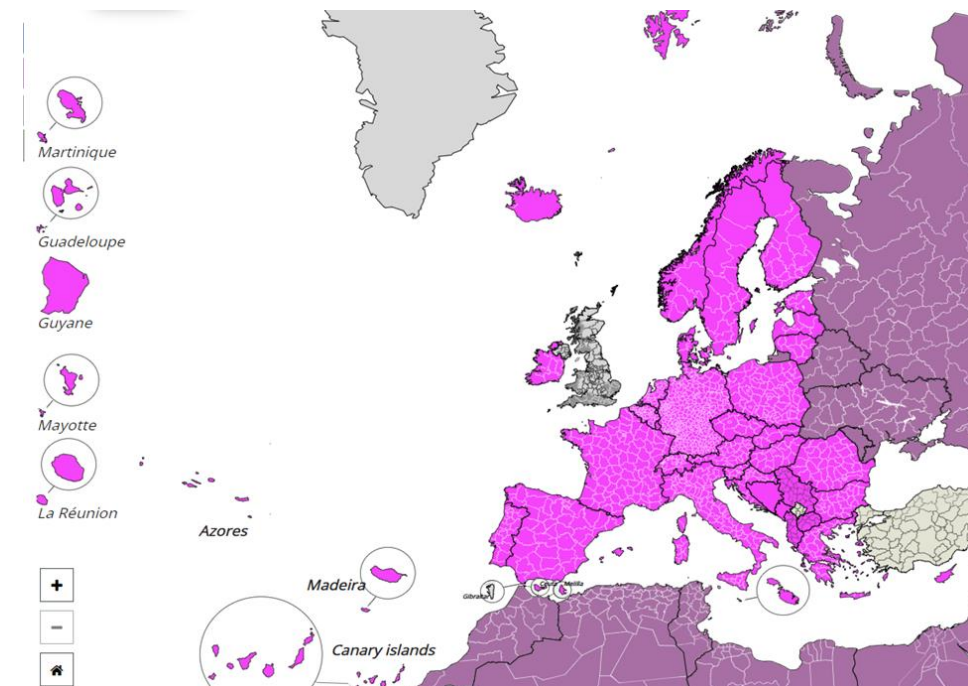
New call envisaged in q1 and q4, 2024- approx. Feb and Oct



Interreg Europe



- The policy responsible authorities are the core target group of Interreg Europe. These are organisations responsible for elaborating and/or delivering regional development policies.
- Project duration – 4 years (3 years core phase and 1 year follow up and monitoring)
- Interreg Europe requires geographical coverage, each project must have at least one partner from: North, South, East and West Europe.
- Project budget is typically from €1M up to €2M.
- Five thematic EU priorities and one non-thematic issue on better governance
- Programme Size €379M ERDF



Just Transition Fund

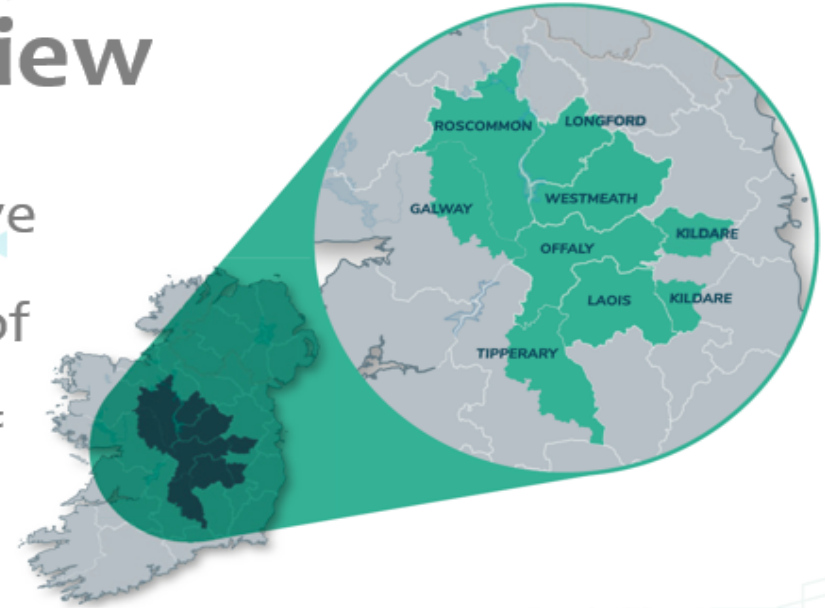
EU Just Transition Fund Overview

1 Single Specific Objective:

The JTF shall contribute to the single specific objective of enabling regions and people to address the social, employment, economic and environmental impacts of the transition towards the Union's 2030 targets for energy and climate and a climate-neutral economy of the Union by 2050, based on the Paris Agreement.

3 Priorities:










- 1) **Generating employment** for former peat communities by investing in the diversification of the local economy
- 2) Supporting the **restoration and rehabilitation of degraded peatlands and regeneration and repurposing of industrial heritage assets**
- 3) Providing former peat communities with **smart and sustainable mobility options** to enable them to benefit directly from the green transition



Just Transition Fund

Ireland Allocation: €84.5M
 Matched by the Exchequer
 Totalling to €169M



<p>P1= Jobs €87m</p>	<p>A1.1: Economic diversification €38m</p> 	<p>A1.2: LECP/REP Schemes €29m</p> 	<p>A1.3: Bioeconomy €20m</p>  <p>An Roinn Talmhaíochta, Bia agus Mara Department of Agriculture, Food and the Marine</p>
<p>P2= Bogs €57m</p>	<p>A2.1: Peatland Restoration €12m</p>  <p>National Park & Wildlife Service</p>	<p>A2.2: Carbon Catchment €15m</p>  <p>An Roinn Talmhaíochta, Bia agus Mara Department of Agriculture, Food and the Marine</p>	<p>A2.3: Network of Trails €30m</p> 
<p>P3= Wheels €18m</p>	<p>A3.1: Electric Buses €2m</p>  <p>Údarás Náisiúnta Iompair National Transport Authority</p>	<p>A3.2: Transport €1m</p>  <p>Údarás Náisiúnta Iompair National Transport Authority</p>	<p>A3.3: Charge Points €15m</p> 

Just Transition Fund

Calls Open:

1.1 Investment Grant-Aid Scheme for Private & Community SMEs

1.1 Tourism Learning Network Programme

<https://www.failteireland.ie/JustTransition.aspx>

1.2 Community and Enterprise Grants

<https://www.pobal.ie/programmes/eujtf-communityenterprise/>



Upcoming Calls:

1.3 Bioeconomy Call 2- March/April 2024

2.2 Carbon Catchment Call- Q2 2024

3.2 Conference for Transport Providers- Q2 2024



Northern & Western Regional Programme Southern, Eastern & Midlands Regional Programme - €880M



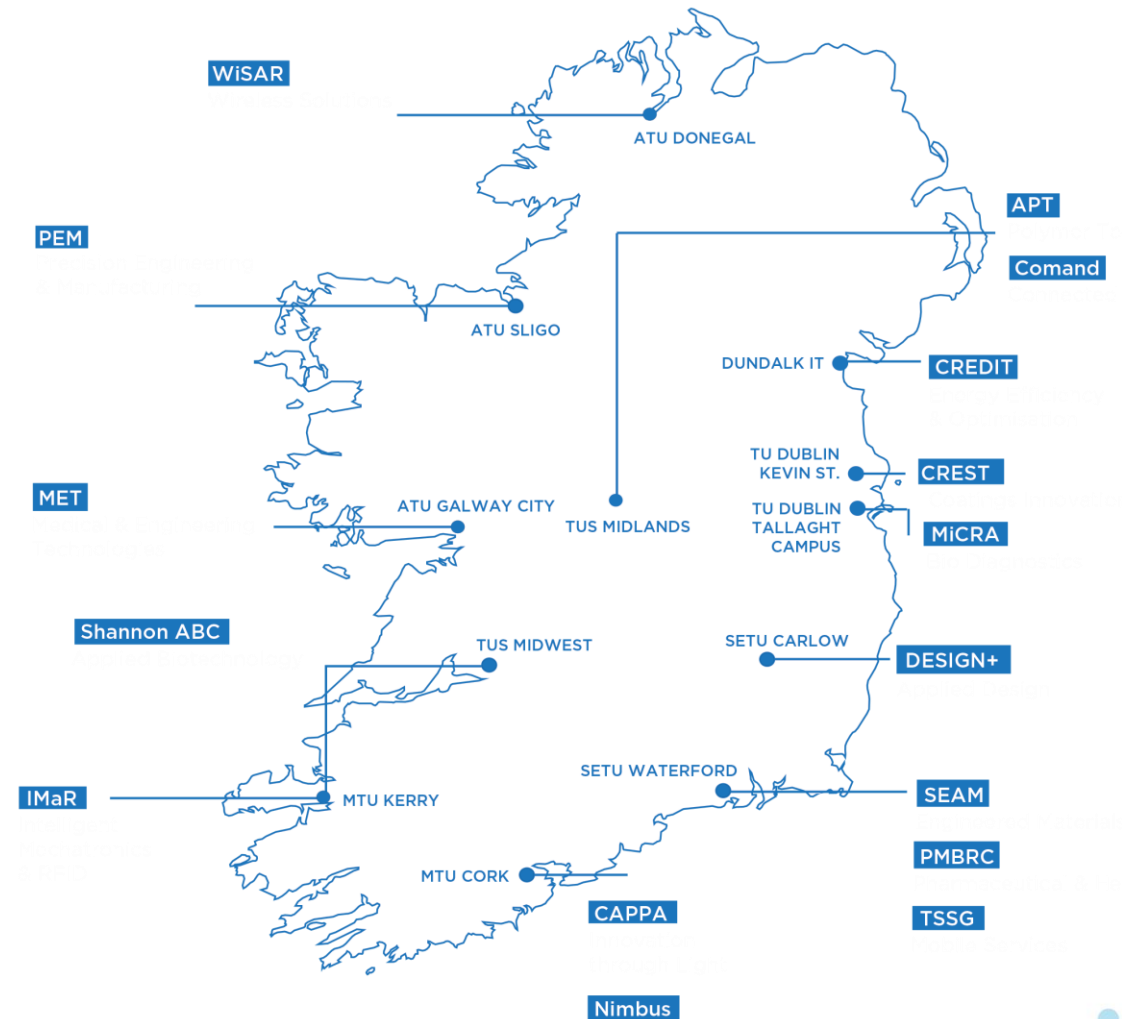
TU RISE Scheme

- Technological University (TU) Research and Innovation Supporting Enterprise (RISE) Scheme. The purpose of the scheme is to establish, strengthen, and systemise research and innovation offices in the ATU to enable engagement with local and regional enterprises and community stakeholders.
- The benefits of the research and innovation office will be accelerated and cascaded across disciplines and campuses of ATU through staff development, including increased researcher human capital, at faculty/school level.



Technology Gateways

- Technology Gateways work in partnership with Technological Universities (TU) across Ireland to deliver innovative expertise and solutions for Irish industry.
- Each Gateway has a different speciality and they often collaborate in areas of common interest.



Priority 2 – Warmer Homes Scheme

Objective: Medium Depth Energy Efficiency Upgrades for Households at Risk of Energy Poverty

Intermediary Body: SEAI – Subset of SEAI's Fully Funded Energy Upgrades



Why: To Reduce Energy Costs of Vulnerable Households & to Reduce GHG Emissions

When: Implementation Plan approved by Commission.
Call to be launched in Q1 2024

THRIVE

Town Centre First Heritage Revival Scheme

Objective: Develop or Enhance Integrated Urban Strategies and fund Capital Projects for the adaptive reuse of Heritage Buildings for Designated Settlements Funding delivered under 2 strands.

Intermediary Body: No Intermediary Body, Funding Awarded directly by Managing Authority to Local Authorities



Why: To Reduce Vacancy & Dereliction in line with Towns Centre Approach and values of the New European Bauhaus

When: Call to be launched 8th February 2024

Total Funding: NWR (€31m) & SEM (€90m) =€121.0 million

EU Policy – New European Bauhaus (NEB)

Core Values & Principles of the NEB

- **Aesthetics (beautiful) Value** - quality of experience and style, inspired by art and culture, responding to needs beyond functionality.
- **Sustainability Value** - in harmony with nature, the environment, and our planet. from climate goals to circularity and biodiversity.
- **Inclusion (together) Value** - including accessibility and affordability.

NEB Principles require a multi-level, participatory and transdisciplinary approach.

- The promotion of the values and working principles of the NEB under THRIVE will ensure that the selected projects are conceived and developed with a reinforced citizen and stakeholder involvement.



The screenshot shows the European Commission website. At the top, there is the European Commission logo and a search bar. Below that, the page title is "Representation in Ireland". The main content area features a news article titled "Urban transformation project from Ballina wins a New European Bauhaus 2023 prize". The article text states: "Ripple, an urban transformation project from Ballina, Co. Mayo, has won the New European Bauhaus Prize 2023 in the 'Reconnecting with nature' category." Below the text is a photograph of hands holding a model of a city plan with various colored markers and a small box labeled "SOGGY".

New European Bauhaus
beautiful | sustainable | together 

Strand 1 Integrated Urban Strategies and Project Pipeline Development

- Development or enhancement of integrated urban strategies using a TCF Framework.
- Identification of projects that promote the conservation and adaptive reuse of our built heritage stock while reducing vacancy and dereliction in town centres.
- Prioritisation, development and specification of project proposals to create a pipeline of investment-ready built heritage reuse projects.

Who Can Apply and For How Much?

- Local Authorities can submit **1 application for each designated settlement.**
- A **competitive** funding call for amounts between **€40k and €200k** for each designated settlement.
- Eligible costs: direct staff, consultancy/professional expertise, survey/site investigation, capacity building, stakeholder/citizen engagement, communication etc

Support for pre-development plans and project development measures



Strand 2 Renovation & Adaptive Reuse of Vacant or Derelict Heritage Buildings

- Delivery of selected pilot and pathfinder projects with a transformative impact on town centre and can inform the approach for other towns.
- Projects will take a citizen and community led approach to planning and design using the Town Centre First framework, embracing the New European Bauhaus values; sustainability, multi- disciplinary and citizen participation, and conservation principles.

Who Can Apply and For How Much?

- Local Authorities can submit **1 application for one designated settlement.**
- A competitive call with funding between **€2 million and €7 million** for each project selected.
- Eligible costs: build costs, consultancy or professional fees, conservation skills and training
Non eligible: purchase of land/buildings, staff costs
- Local authority commitment: multi-disciplinary staff senior management commitment etc

Construction ready proposals aligned with TCF/NEB & conservation principles

