



enable

connecting • communities

DLR Active Travel Testbed

Dr. Robert Egan

Dr. Conor Dowling

Dr. Brian Caulfield



European Union
European Regional
Development Fund



DLR Active Travel Testbed

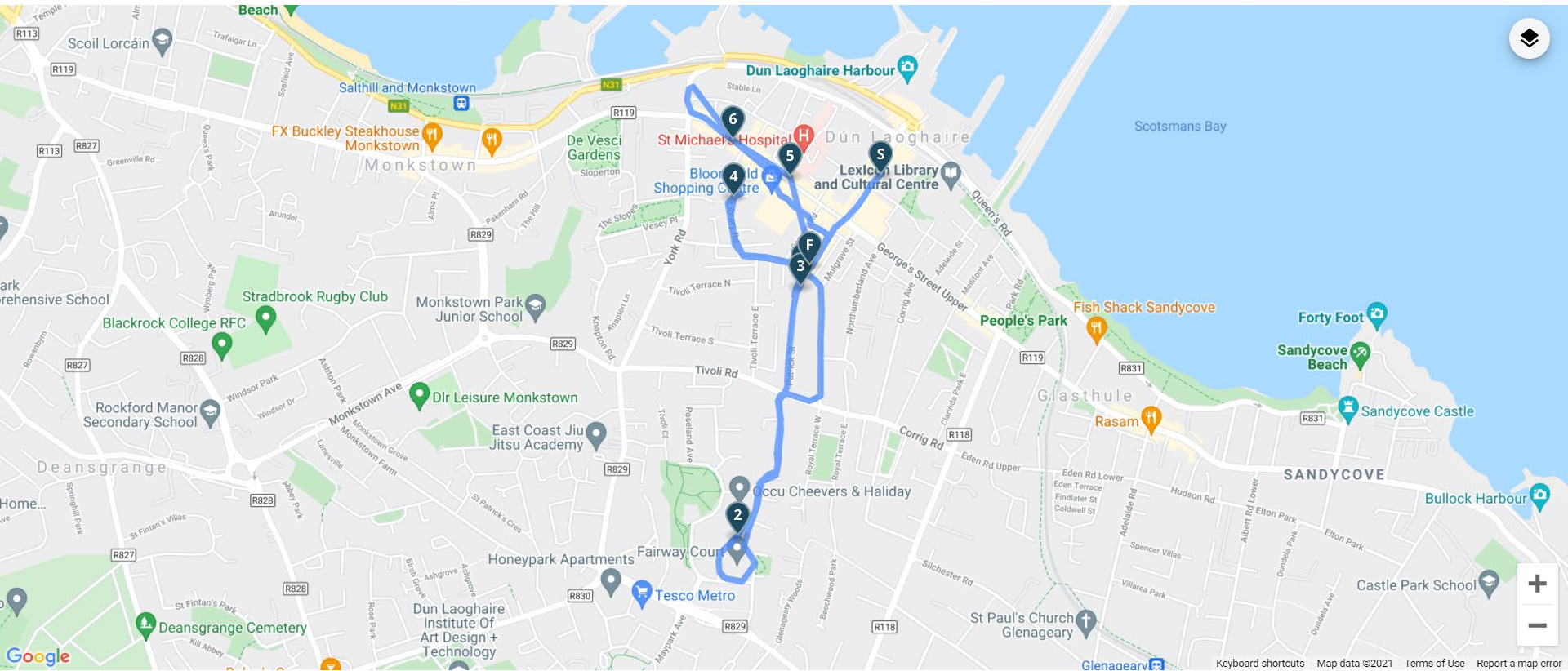
1. Cycle Parking
2. Cycle Logistics
3. Cycle Planning



bleeeperactive.com: eCargo bike for my business



copenhagenize.eu: A Guide to Planning Cyclelogistics Hubs



Emissions Modelling

Emissions	Trial Data	50 Companies
CO ₂	1.92 tonnes	9.6 tonnes
PM2.5	0.0005 tonnes	0.0025 tonnes
NO _x	0.0046 tonnes	0.023 tonnes



TRAVEL & TRANSPORT

dlr Cycle Parking Survey: Call for Survey Participants

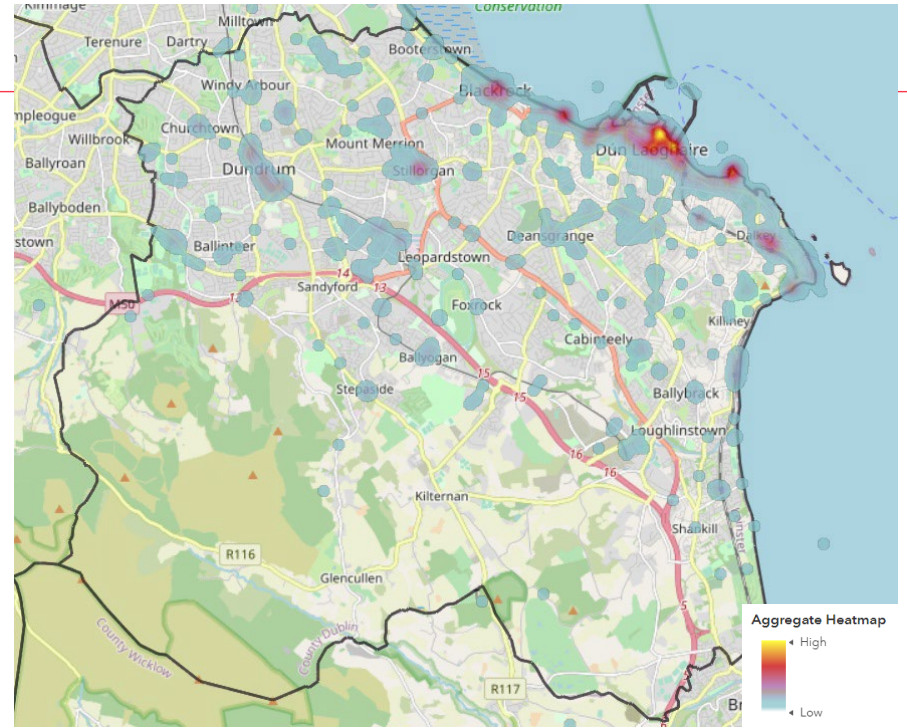
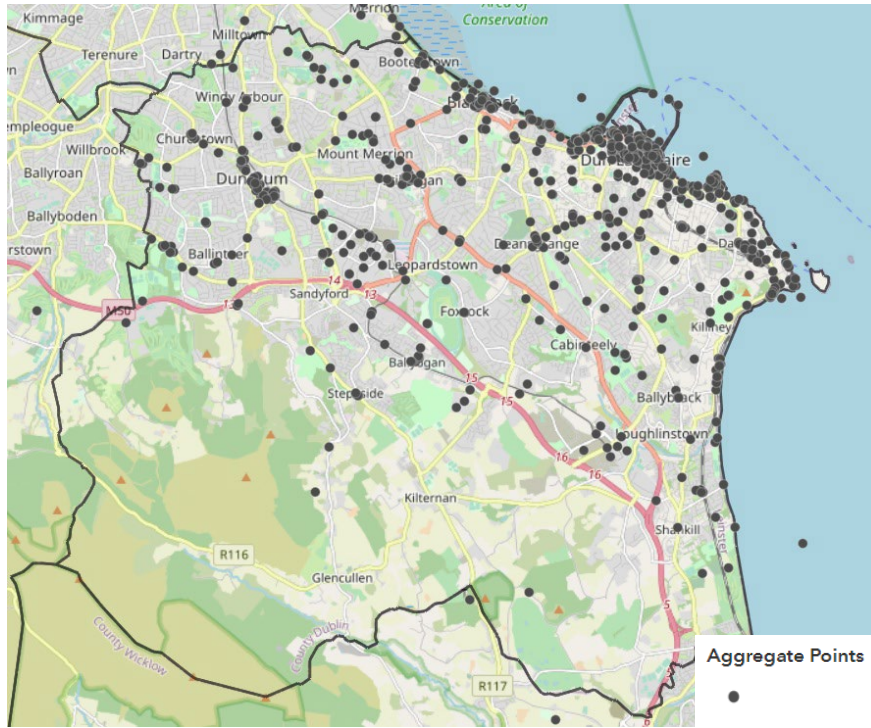
[General News](#) | [Public Notices](#) | [Press Releases](#) | Tuesday, July 27, 2021 **DLR COUNTY**

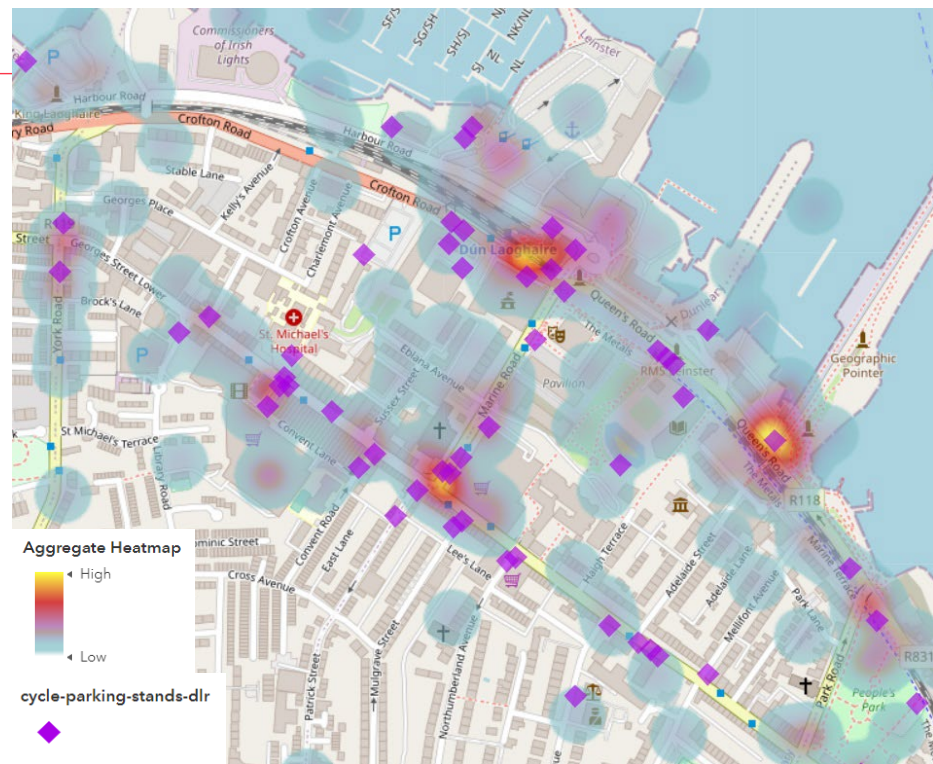
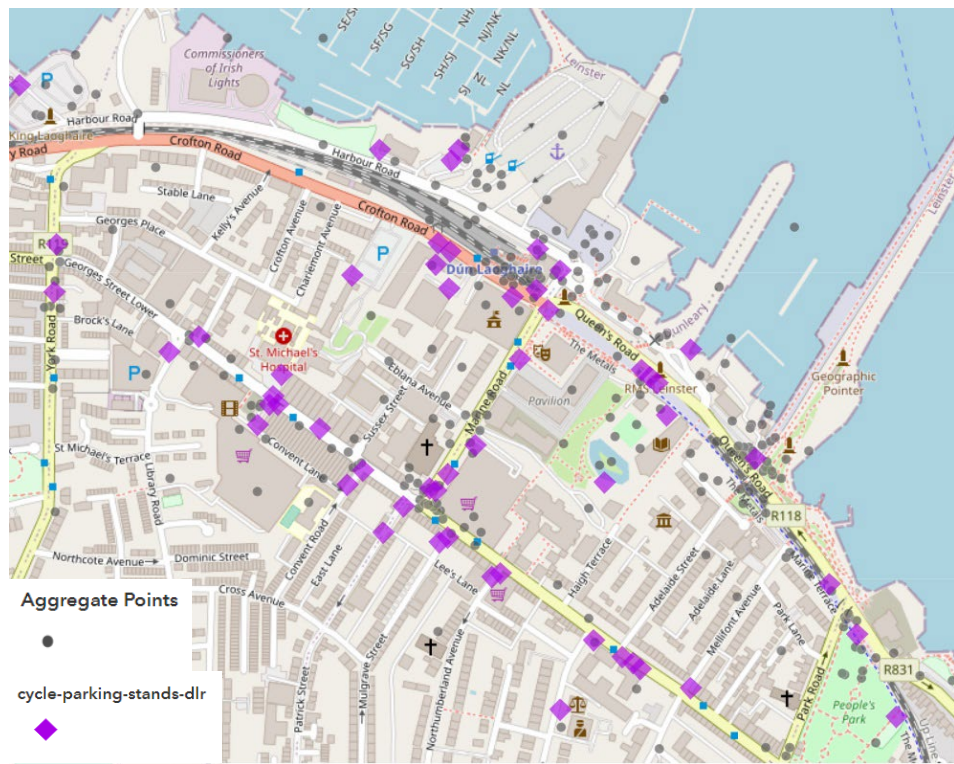
We are asking people who live, work or regularly visit Dún Laoghaire-Rathdown County who either own or have access to a cycle to take part in this survey, which will inform cycle parking measures in Dún Laoghaire-Rathdown. By gathering information on how people currently cycle in dlr, what cycle parking they use, what cycle parking they would like to see, and where they would like to see it, we aim to help those that work, live and visit the county with improved cycle parking facilities.

[Take the survey now](#)

SHARE   









stickbottle.com: Video: First look at new Liffey Cycle Route on Dublin's quays



dlrcoco.ie: DLR Connector: Pre-Design Consultation



enable

connecting • communities

Thanks for listening!

Email: eganr5@tcd.ie



European Union
European Regional
Development Fund

