



Tionól Réigiúnach
an Deiscirt

Southern Regional
Assembly

Regional Planning Functions of The Regional Assembly



Tionól Réigiúnach
an Deiscirt

Southern Regional
Assembly

IRELAND PLANNING POLICY HEIRARCHY 2016+



- **The Regional Spatial and Economic Strategy (RSES) is Statutory Strategic policy document which sets out a vision and framework for the strategic planning and economic development of the region to 2031**
- **Overarching purpose of the RSES is to support the implementation of the National Planning Framework (NPF) & Government Economic Policies**
- **Sets the framework for local planning and economic development**
- **Adoption of RSES a Reserved Function**



NPF/RSES Strategy

- **Shift in Regional balance – an additional 1m people by 2040: By increased growth in the regions - '50:50' target to address the spatial, societal, and environmental issues facing Ireland**
- **Supporting ambitious growth of the four cities to enable them grow as viable alternatives to Dublin & Improvement to Dublin.**
- **Structural change through Regional Growth Centres and Key Towns and rural areas.**
- **Compact growth, quality development, placemaking.**



Tionól Réigiúnach
an Deiscirt

Southern Regional
Assembly

Scope and Content of RSES

- An **Integrated Spatial and Economic Strategy** to support and implement the national policy objectives set out in the National Planning Framework
- Focus on **higher level policies**
- Focus on **settlements of key regional importance** & sets population targets
- **Climate Change** – Regional Renewable Electricity Strategy
- Includes a **MASP** for Cork, Limerick and Waterford
- Sequencing of **infrastructure prioritisation**, delivery and co-ordination, and deliver **compact growth**.
- **Strategies for Rural Areas**
- Emphasis on **Transport and Connectivity**



VISION:

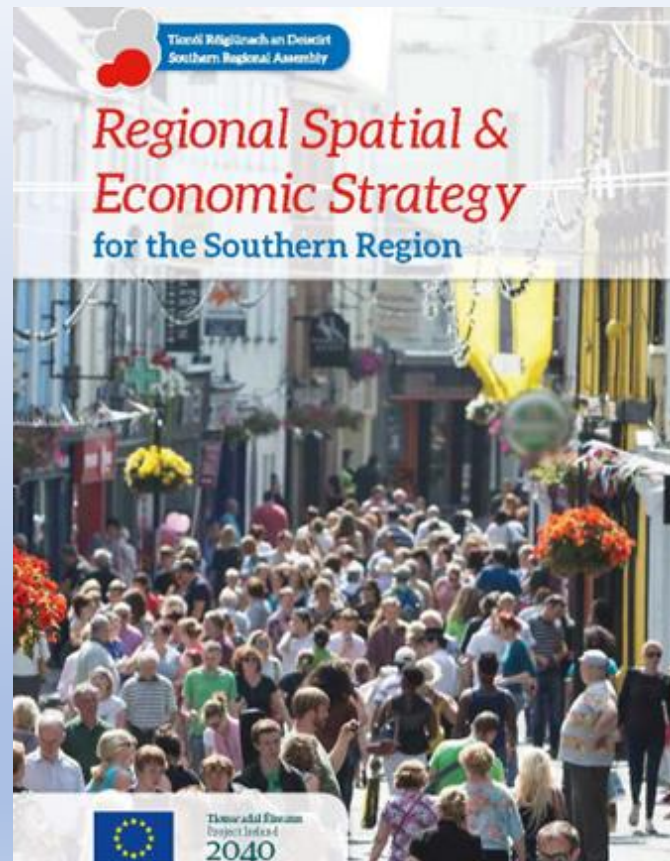
‘to make the Southern Region one of Europe’s most **creative & innovative**, **greenest** and **liveable** Regions’

STRATEGY STATEMENTS

11 Strategy Statements on Key Themes

RPOs – Regional Policy Objectives

MASPs – Metropolitan Area Strategic Plans

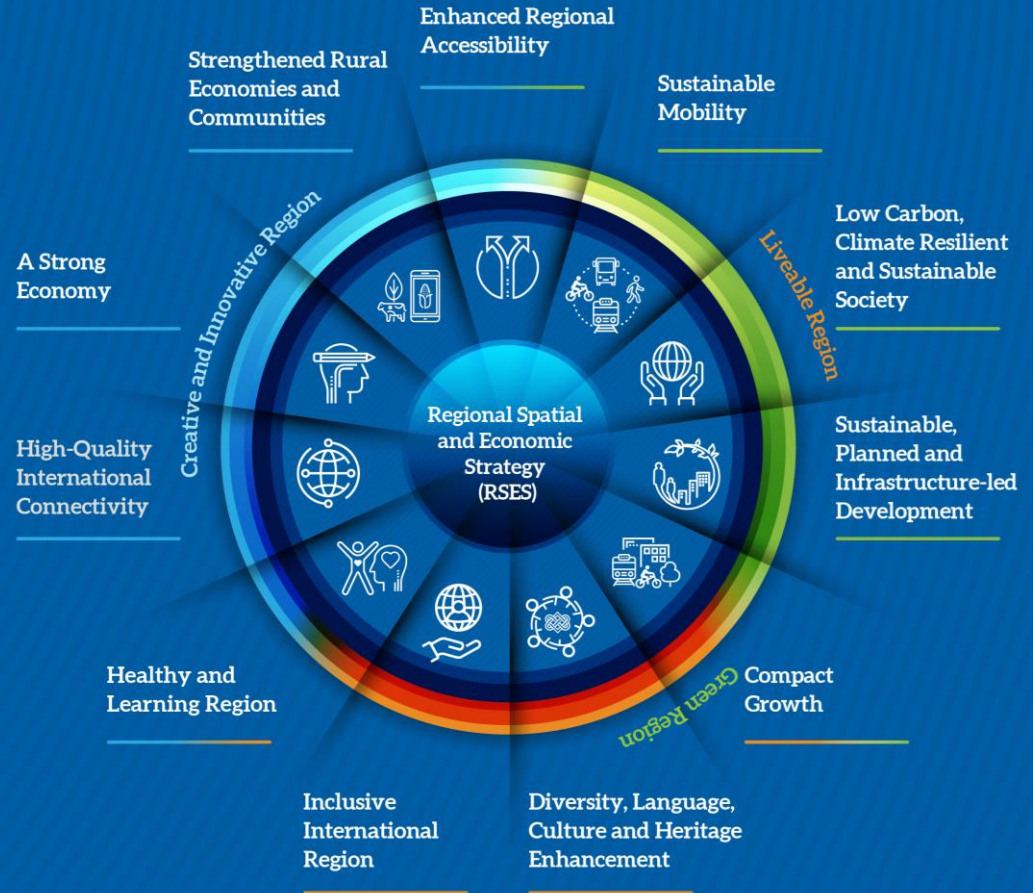


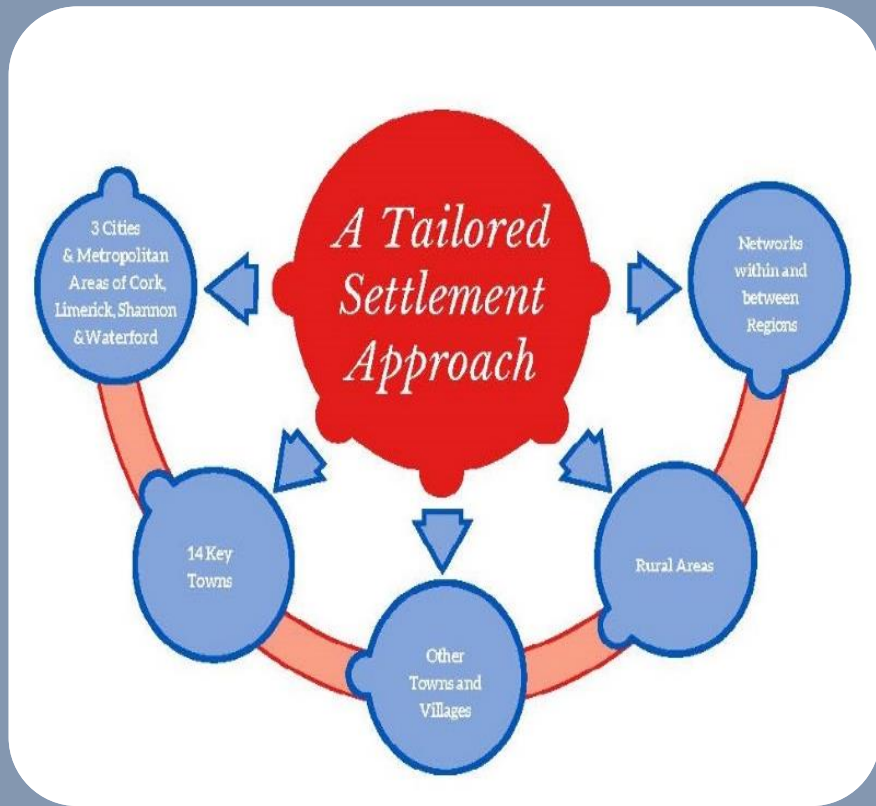


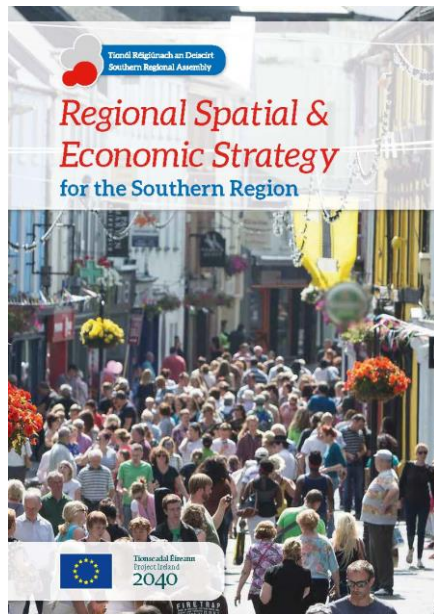
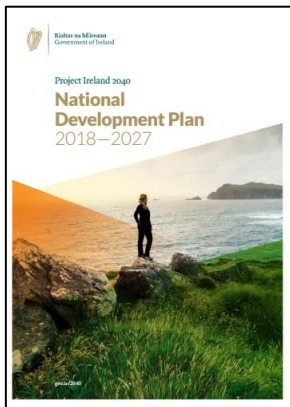
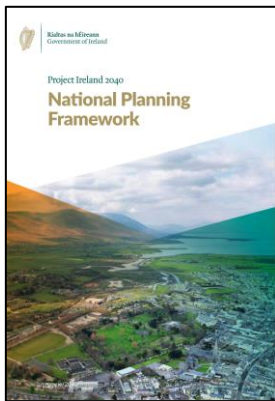
Tionól Réigiúnach
an Deiscirt

Southern Regional
Assembly

RSES STRATEGY







Tionól Réigiúnach an Deiscirt
Southern Regional Assembly

Regional Spatial & Economic Strategy for the Southern Region

Tionscadal Éireann
Project Ireland
2040

© IRETRAP

Strategic Plan to Drive
Economic Development

Cork Metropolitan Area Strategic Plan

Extract from the Regional Spatial and Economic Strategy for the Southern Region

Strategic Plan to Drive
Economic Development

Limerick-Shannon Metropolitan Area Strategic Plan

Extract from the Regional Spatial and Economic Strategy for the Southern Region

Strategic Plan to Drive
Economic Development

Waterford Metropolitan Area Strategic Plan

Extract from the Regional Spatial and Economic Strategy for
the Southern Region



Significant Challenges & Difficult Choices

- Significant Population Growth
- High levels of Economic Growth
- Need to reinvigorate Rural areas
- Climate Change
- Renewable Energy – RRES

| Country | Population 1971 (millions) | Population 2020 (millions) | Change '71-'20 (millions) | Change '71-'20 (%) |
|----------------|-------------------------------|-------------------------------|------------------------------|-----------------------|
| Scotland | 5,229 | 5,510 | 281 | 5% |
| Denmark | 4,963 | 5,831 | 868 | 17% |
| Finland | 4,612 | 5,531 | 919 | 20% |
| Netherlands | 13,190 | 17,440 | 4,250 | 32% |
| Norway | 3,903 | 5,379 | 1,476 | 38% |
| Ireland | 2,992 | 4,995 | 2,003 | 67% |
| Canada | 21,960 | 38,010 | 16,050 | 73% |
| New Zealand | 2,853 | 5,084 | 2,231 | 78% |
| Australia | 12,940 | 25,690 | 12,750 | 99% |
| Singapore | 2,113 | 5,686 | 3,573 | 169% |

Significant Opportunities

- Regional Assembly at the forefront of change in Ireland over the next 20 years
 - Next RSES has huge potential and significance
 - SRA proactive organisation with commitment to the Region
 - Strong interaction between EU & Planning Side
- 
- A decorative graphic in the bottom right corner consisting of several overlapping circles in dark blue and red, with thin red outlines.



Tionól Réigiúnach
an Deiscirt

Southern Regional
Assembly

